



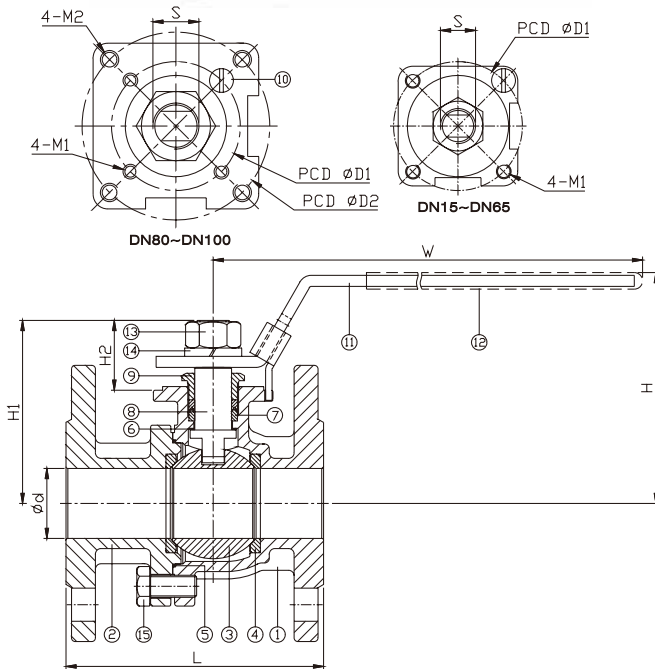
2-PC. FLANGED END BALL VALVE

2020S

FEATURES



- Full port, 1/2"~8" (DN15~DN200)
- W.P. : CLASS 150/300
- W.T. : -20°C~200°C (-4°F~392°F)
- Investment casting
- Blow-out proof stem
- Anti-static device (option)
- Locking device
- ISO 5211 Mounting pad
- **TA-Luft approved (option)**
- Flange dimension: ASME B16.5
- Face to face: ASME B16.10



ITEM	PARTS	MATERIAL
1	BODY	ASTM A351-CF8M
2	CAP	ASTM A216-WCB
3	BALL	ASTM A351-CF8M
4	SEAT	PTFE / RTFE
5	SEAL	
6	THRUST WASHER	PTFE
7	PACKING	
8	STEM	ASTM A276-316
9	GLAND NUT	AISI 304
10	STOP PIN	
11	HANDLE	STAINLESS STEEL
12	HANDLE SLEEVE	PVC
13	STEM NUT	
14	SPRING WASHER	AISI 304
15	BOLT	

DN	d	H	H1	H2	S	W	D1	D2	M1	M2	CLASS 150		CLASS 300	
											L	Torque (N-M)	L	Torque (N-M)
15	15	86	57.2	23.7	11.11	169	42	-	M5	-	108	3.8	140	7.5
20	20	89	60	23.5	11.1	169	42	-	M5	-	117	5.5	152	7.6
25	25	103	73.5	29	12.7	205.5	50	-	M6	-	127	6.5	165	17.5
32	32	103	78.5	29	12.7	205.5	50	-	M6	-	140	9	178	20
40	38	130	102.9	39.4	19.05	267	70	-	M8	-	165	25	190	22.9
50	50	135	110.4	39.4	19.05	267	70	-	M8	-	178	38	216	32.2
65	65	147	122	38.6	19.05	289	70	-	M8	-	190	45	241	42.3
80	80	166	142	43	19.05	390	70	102	M8	M10	203	61	282	87.2
100	100	181	157	43	19.05	390	70	102	M8	M10	228.5	80	305	98.2

unit:mm

NPS	d	H	H1	H2	S	W	D1	D2	M1	M2	CLASS 150		CLASS 300	
											L	Torque (in-lb)	L	Torque (in-l)
1/2"	0.59	3.39	2.25	0.93	0.44	6.65	1.65	-	M5	-	4.25	33.6	5.51	66.4
3/4"	0.79	3.5	2.36	0.93	0.44	6.65	1.65	-	M5	-	4.61	48.7	5.98	67.3
1"	0.98	4.06	2.89	1.14	0.5	8.09	1.97	-	M6	-	5	57.5	6.5	154.9
1-1/4"	1.26	4.06	3.09	1.14	0.5	8.09	1.97	-	M6	-	5.51	79.7	7.01	177
1-1/2"	1.5	5.12	4.05	1.55	0.75	10.51	2.76	-	M8	-	6.5	221.3	7.48	202.7
2"	1.97	5.31	4.35	1.55	0.75	10.51	2.76	-	M8	-	7.01	336.3	8.5	285
2-1/2"	2.56	5.79	4.8	1.52	0.75	11.38	2.76	-	M8	-	7.48	398.3	9.49	374.4
3"	3.15	6.54	5.59	1.69	0.75	15.35	2.76	4.02	M8	M10	7.99	539.9	11.1	771.8
4"	3.94	7.13	6.18	1.69	0.75	15.35	2.76	4.02	M8	M10	9	708.1	12.01	869.1

unit:in