

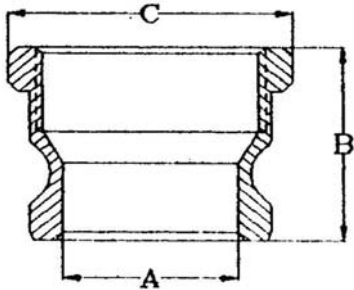
0.1	▽	Ra
0.2	▽▽	JIS
1.6	▽▽▽	
6.3	▽▽▽▽	
25	▽▽▽▽▽	

±0.1	0.5~5
±0.22	6~30
±0.3	31~120
±0.5	121~320
±0.8	321~1000

HAITIMA CORPORATION
 P.O.BOX 34-36 TAIPEI
 Tel:+886-2-26585800

E-mail:haitima@seed.net.tw
 TAIWAN R.O.C. www.haitima.com.tw
 Fax:+886-2-26582266

PART A



Size	1/2"	3/4"	1"	1-1/4"	1-1/2"	2"	2-1/2"	3"	4"	6"
Size of Thread	1/2"	3/4"	1"	1-1/4"	1-1/2"	2"	2-1/2"	3"	4"	6"
B: Overall Length	NPT	40.9	39	48.5	52.5	54.7	63.5	68	70	74.6
	BSPT	40.9	39	48.5	52.5	54.7	63.5	83	70	74.6
A: Min I.D.	14.3	21	23.8	30.8	38.5	46	58	73.2	98.2	150
C: Max Across Corners of Adaptors	28.8	39.2	43.8	51.9	60.4	70.4	82.3	97.8	126.8	187.6

unit:mm



HAITIMA CORPORATION

CHECK BY	DRAWING BY	DATE	SPECIFICATION	Cam & Groove Couplers & Adaptors
	Sammy	Apr.21.2014	MATERIAL	SS 316
			PROCESS/Nr.	
			UNIT / SCALE	mm

△			
△			
△			
Revise	Description	Date	Approve
DRAWING NO. FK-04		-14	