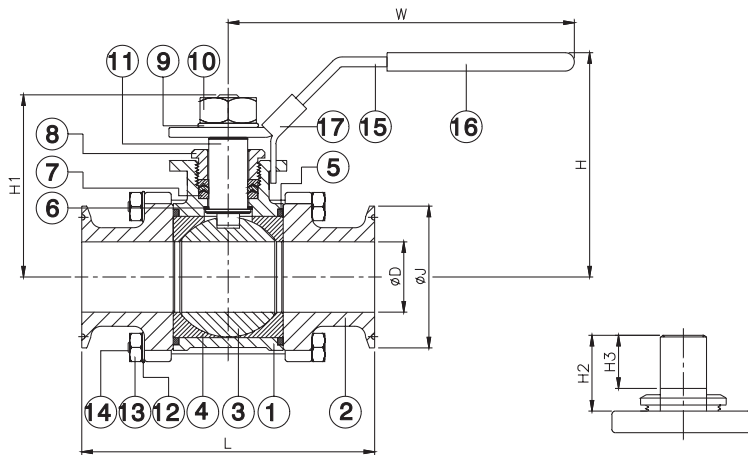
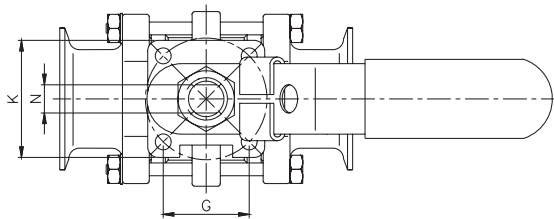




FEATURES

- Clamp end, 1/2"~4" (DN15~DN100)
- Body W.P. : 1000 WOG (PN63)
- Clamp End W.P. : 200 WOG
- W.T. : -20°C~200°C (-4°F~392°F)
- Investment casting
- Blow-out proof stem
- Cavity filled seats (option)
- Locking device
- ISO 5211 Mounting pad



ITEM	PARTS	MATERIAL
1	BODY	ASTM A351-CF8M
2	CAP	
3	BALL	PTFE
4	SEAT	
5	SEAL	
6	THRUST WASHER	
7	PACKING	AISI 304
8	GLAND NUT	
9	STEM WASHER	
10	STEM NUT	AISI 316
11	STEM	
12	BOLT WASHER	AISI 304
13	NUT	
14	BOLT	STAINLESS STEEL
15	HANDLE	
16	HANDLE SLEEVE	PVC
17	LOCKING DEVICE	STAINLESS STEEL

DN	D	W	H	H1	H2	H3	L	G	K	J	N	ISO 5211	Torque For Cavity Filler Seat (N-M)	Weight (kg)
15	9.6	141.2	63.5	48.5	18	13	90.7	25.5	37	25.4	6.5	F03	3.6	0.8
20	15.8	141.2	66.6	51.8	18.7	13	103	25.5	37	25.4	6.5	F03	5.1	1
25	22.1	141.2	69.4	54.5	18	13	115	29.7	42	50.5	6.5	F04	8.1	1.4
40	34.8	188.3	100.6	82.5	30	19.5	140	35.4	50	50.5	8.5	F05	19.5	2.7
50	47.7	188.3	110.6	91.5	29	19.5	158	35.4	50	64	8.5	F05	26	4.2
65	60.3	260	139.2	117.2	37.7	26	197	49.5	72	77.5	12	F07	52	8.7
80	72.9	260	148.2	126.7	38.2	26	228	49.5	72	91	12	F07	58.5	14.2
100	97.5	295	175	162	52	35	241.8	72.1	94	119	16	F10	84.5	20.5

unit:mm

NPS	D	W	H	H1	H2	H3	L	G	K	J	N	ISO 5211	Torque For Cavity Filler Seat (in-lb)	Weight (lb)
1/2"	0.38	5.56	2.5	1.91	0.71	0.51	3.57	1	1.46	1	0.26	F03	32.2	1.7
3/4"	0.62	5.56	2.62	2.04	0.74	0.51	4.06	1	1.46	1	0.26	F03	44.9	2.1
1"	0.87	5.56	2.73	2.15	0.71	0.51	4.53	1.17	1.65	1.99	0.26	F04	71.3	3
1-1/2"	1.37	7.41	3.96	3.25	1.18	0.77	5.51	1.39	1.97	1.99	0.33	F05	172.6	5.9
2"	1.88	7.41	4.35	3.6	1.14	0.77	6.22	1.39	1.97	2.52	0.33	F05	230.1	9.2
2-1/2"	2.37	10.24	5.48	4.61	1.48	1.02	7.76	1.95	2.83	3.05	0.47	F07	460.2	19.2
3"	2.87	10.24	5.83	4.99	1.5	1.02	8.98	1.95	2.83	3.58	0.47	F07	517.8	31.3
4"	3.84	11.61	6.89	6.38	2.05	1.38	9.52	2.84	3.7	4.69	0.63	F10	747.9	45.2

unit:in

